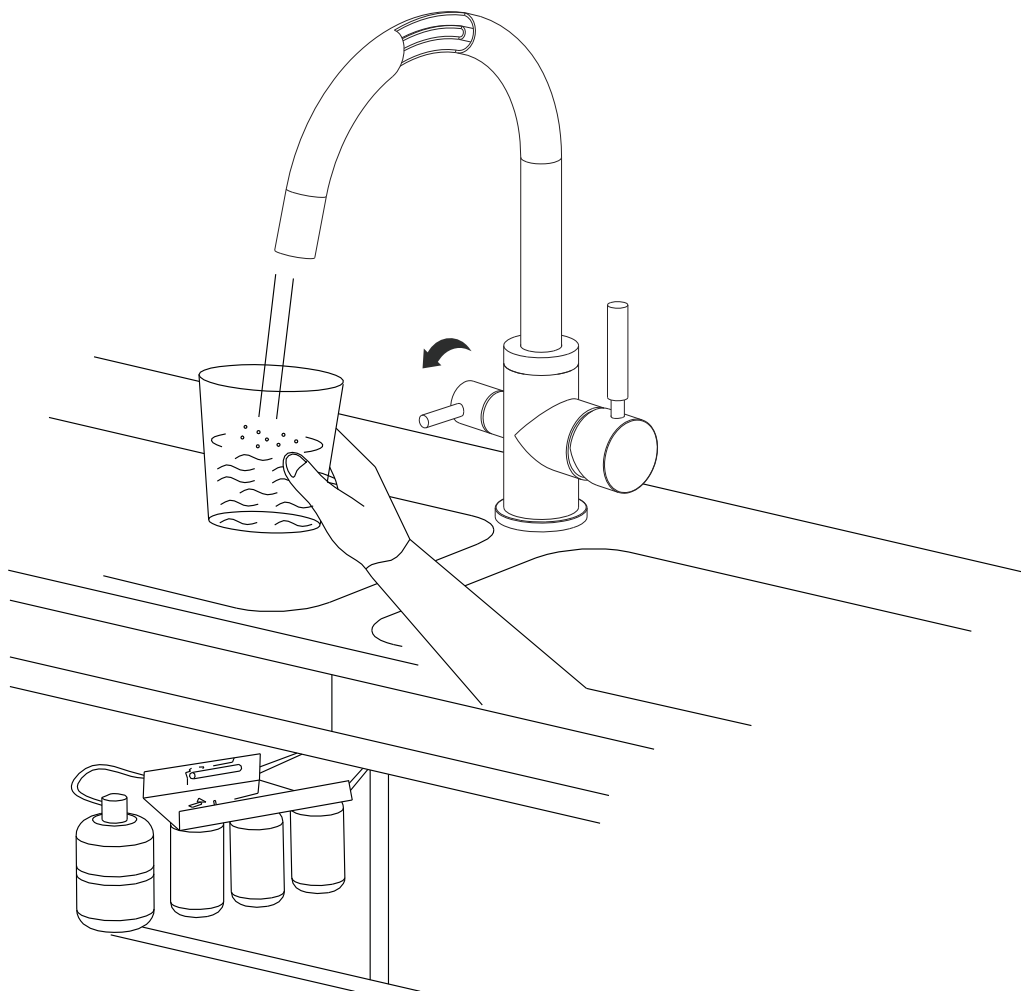


osmio

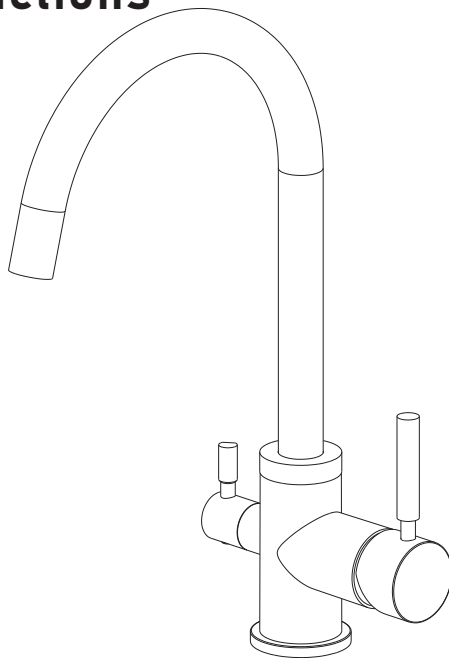
WATER TECHNOLOGY

Osmio Bella Chrome Three Way Kitchen Tap



Installation Instructions

Three Way Kitchen Tap



Specifications

- 1.Chrome surface
- 2.Ceramic valve cartridge
- 3.Flow rated:2.2G/M base on 0.5Mpa
- 4.1/4" Connector for filtered water pipe

Installation tools

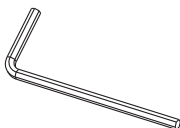
- *Monkey wrench
- *PTFE Tape
- *Allen key (2.5mm)



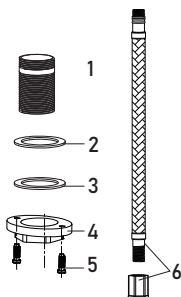
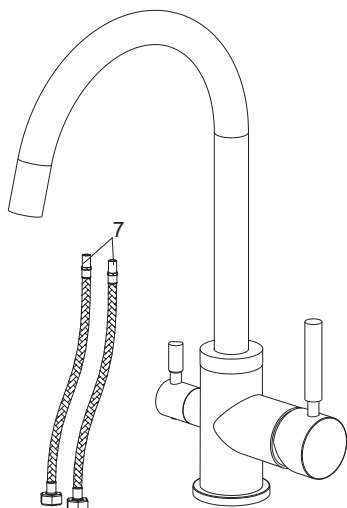
Monkey wrench



PTFE tape



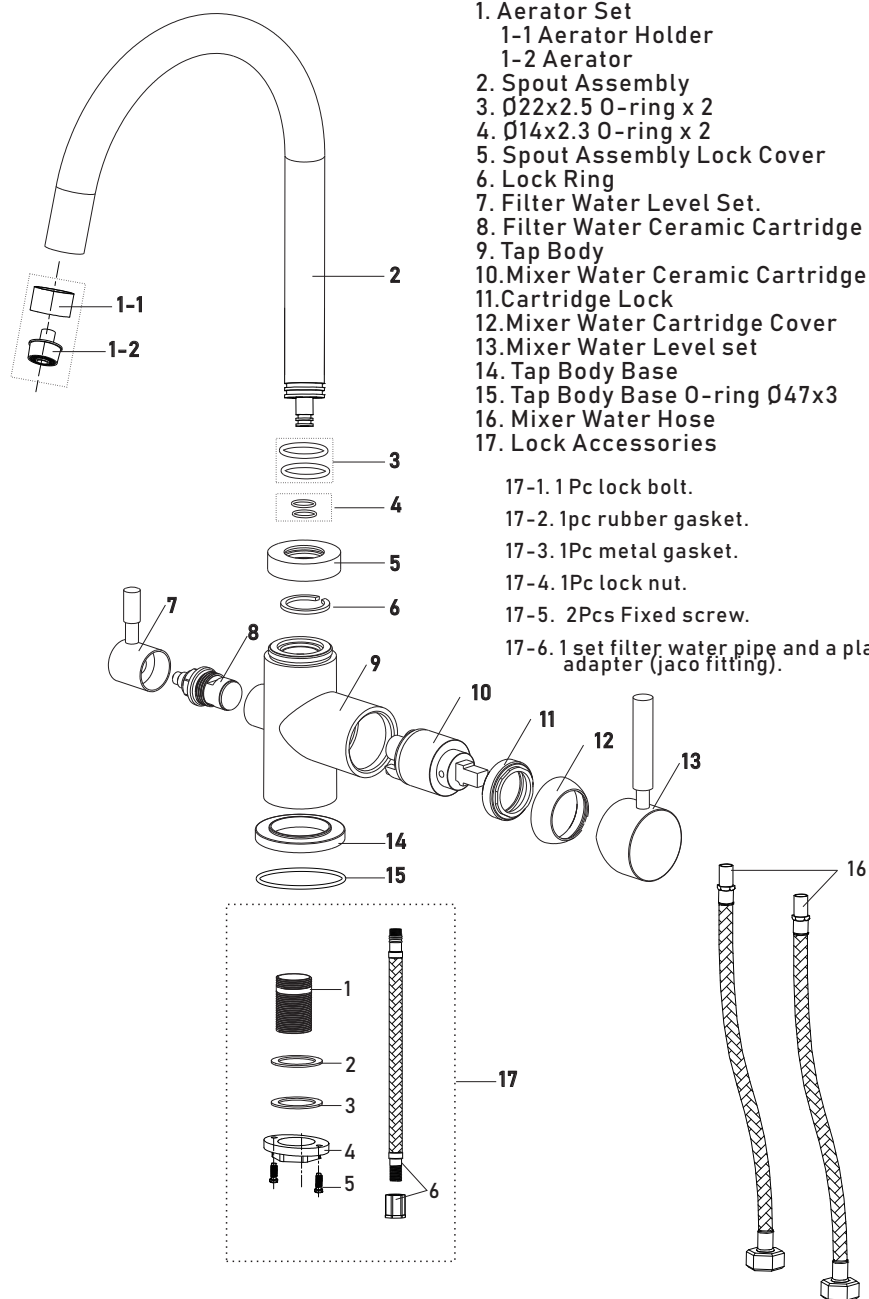
Allen key (2.5 mm)



Accessories

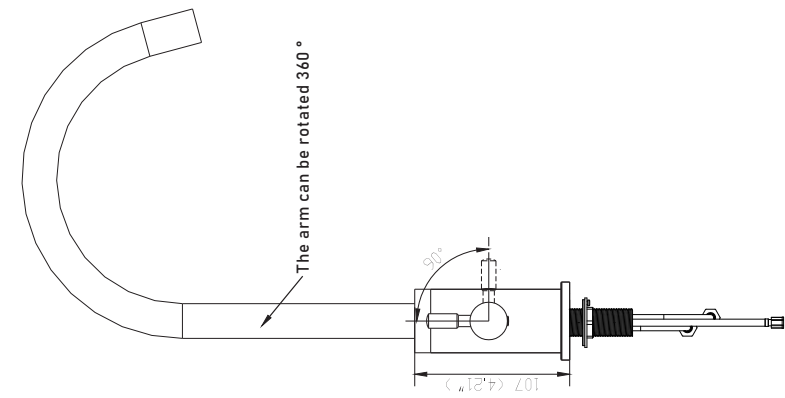
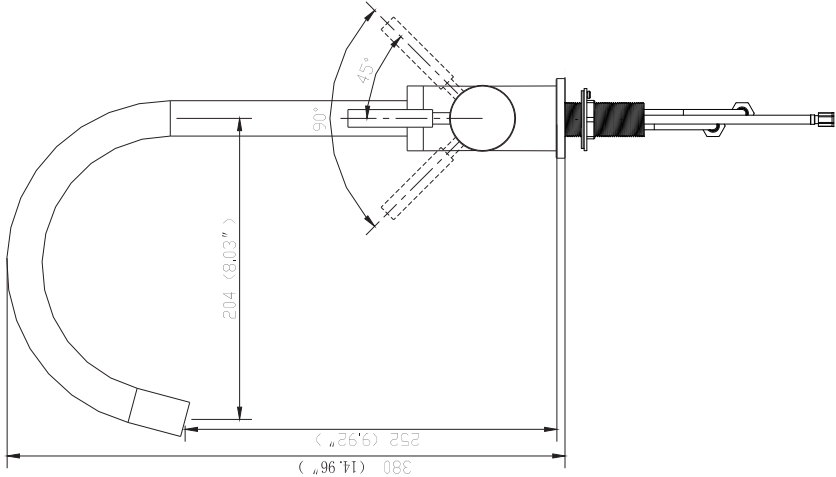
1. 1 Pc lock bolt.
2. 1 Pc rubber gasket.
3. 1 Pc metal gasket.
4. 1 Pc lock nut.
5. 2 Pcs Fixed screw.
6. 1 set filtered water hose and plastic adapter (jaco fitting).
7. 2 Pcs hot and cold 600mm hoses.

Replacement Parts



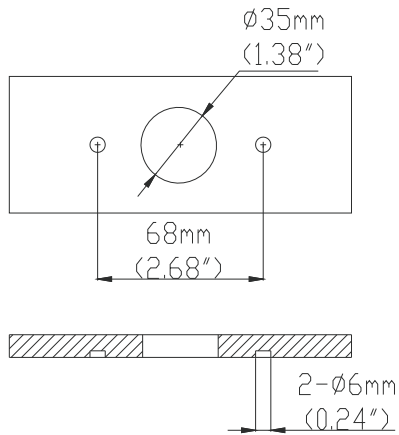
1. Aerator Set
 - 1-1 Aerator Holder
 - 1-2 Aerator
2. Spout Assembly
3. Ø22x2.5 O-ring x 2
4. Ø14x2.3 O-ring x 2
5. Spout Assembly Lock Cover
6. Lock Ring
7. Filter Water Level Set.
8. Filter Water Ceramic Cartridge
9. Tap Body
10. Mixer Water Ceramic Cartridge
11. Cartridge Lock
12. Mixer Water Cartridge Cover
13. Mixer Water Level set
14. Tap Body Base
15. Tap Body Base O-ring Ø47x3
16. Mixer Water Hose
17. Lock Accessories
 - 17-1. 1 Pc lock bolt.
 - 17-2. 1pc rubber gasket.
 - 17-3. 1Pc metal gasket.
 - 17-4. 1Pc lock nut.
 - 17-5. 2Pcs Fixed screw.
 - 17-6. 1 set filter water pipe and a plastic adapter (jaco fitting).

Profile Drawing



Item No.	Quantity	Unit Name	Designation	Material	Dimension	etc.	Article No.	Reference
1	1	3 way faucet						
2	1	3 way faucet						
3	1	3 way faucet						
4	1	3 way faucet						
5	1	3 way faucet						
6	1	3 way faucet						
7	1	3 way faucet						
8	1	3 way faucet						
9	1	3 way faucet						
10	1	3 way faucet						
11	1	3 way faucet						
12	1	3 way faucet						
13	1	3 way faucet						
14	1	3 way faucet						
15	1	3 way faucet						
16	1	3 way faucet						

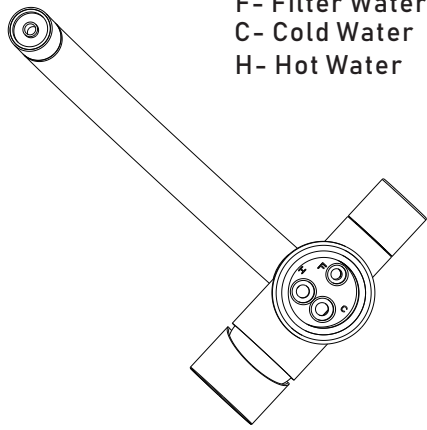
Tap Installation Instructions



Step ①

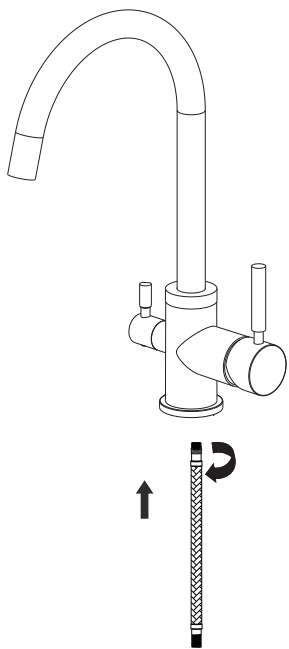
When installing the tap make sure each tap hose is attached to the correct connection as marked (hot/cold connection is interchangeable):

- F- Filter Water
- C- Cold Water
- H- Hot Water



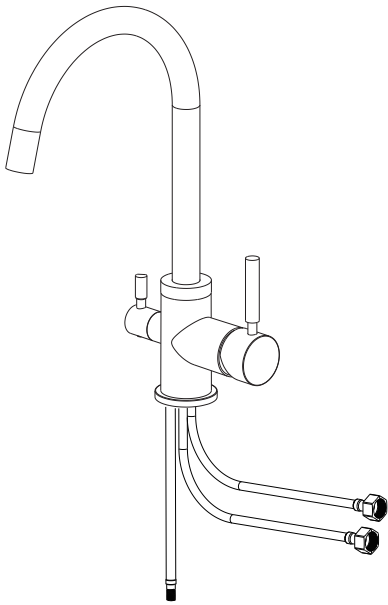
Step ②

Connect the filter water hose



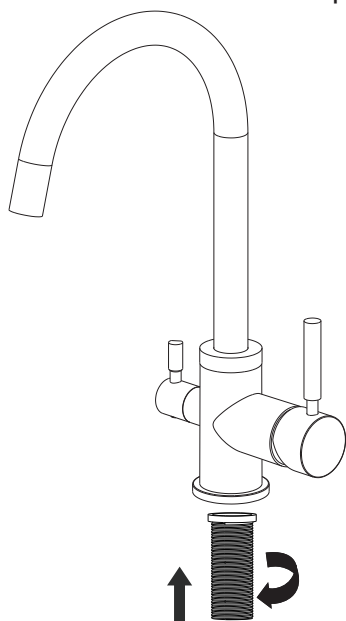
Step ③

Attach the hot and cold hose



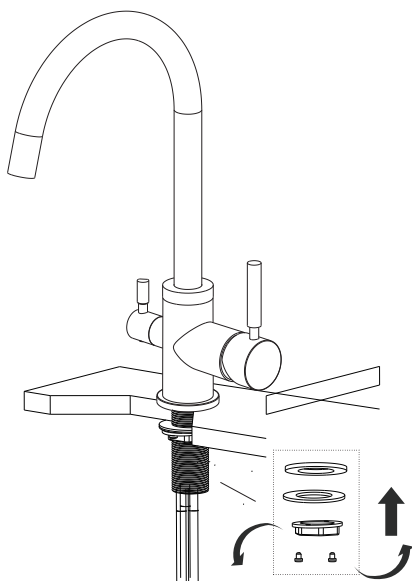
Step ④

Fix the Lock bolt to the tap



Step ⑤

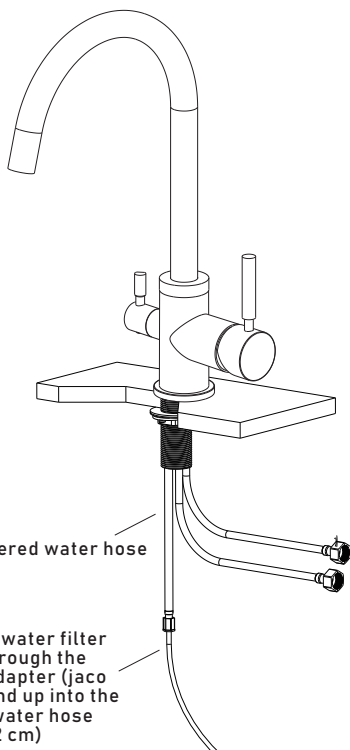
Attach the rubber gasket, metal gasket and lock nut to the lock bolt



Step ⑥

Filtered water hose

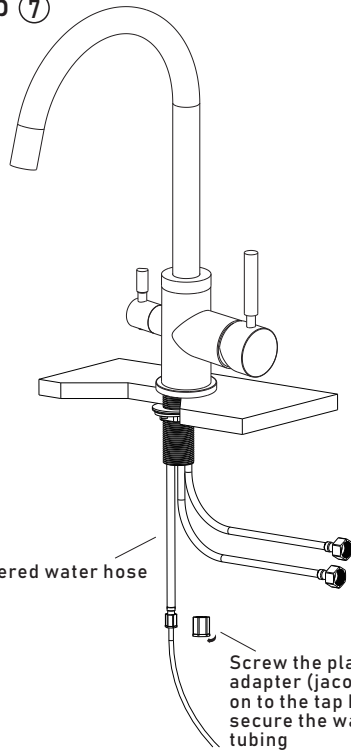
Push the water filter tubing through the plastic adapter (jaco fitting) and up into the filtered water hose (approx 2 cm)



Step ⑦

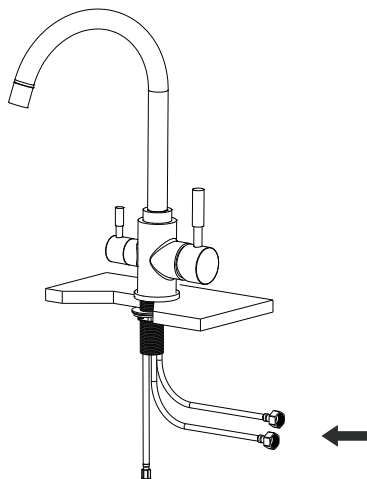
Filtered water hose

Screw the plastic adapter (jaco fitting) on to the tap hose to secure the water filter tubing



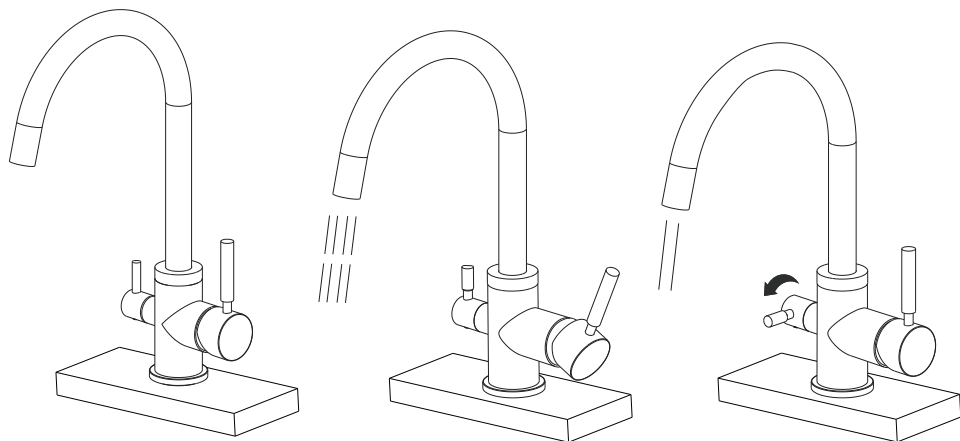
Step ⑧

Connect the cold & hot water hose to the supply water



Step ⑨

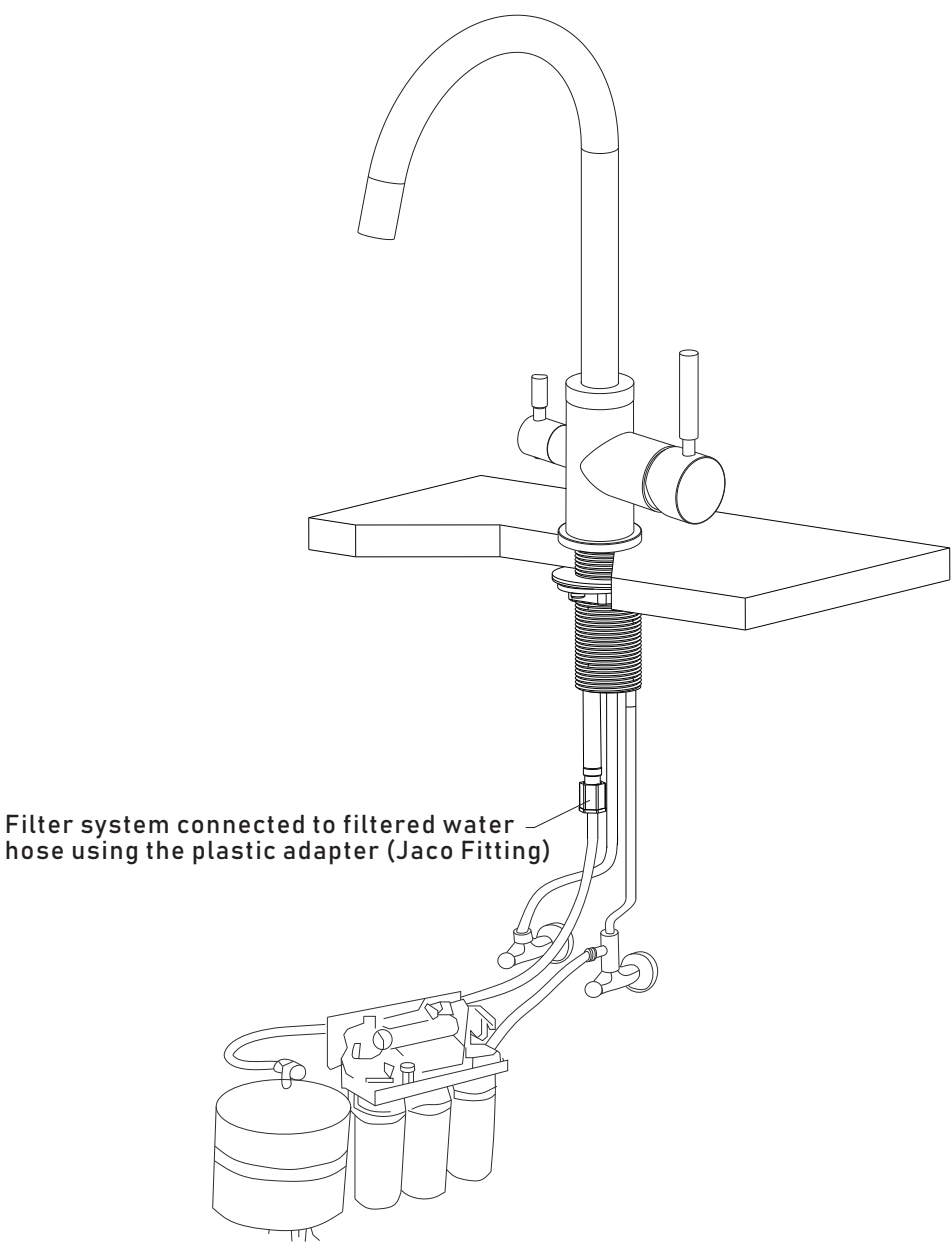
Test the tap to make sure it is dispensing water



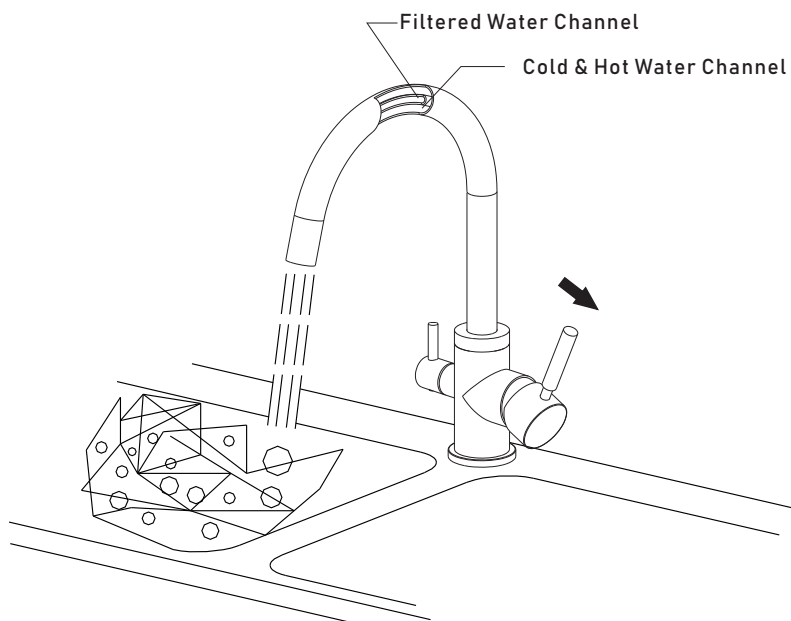
Warning

Please remove any sand, silt or anything that may block the valve cartridge before fixing the tap to your kitchen Counter top. If you experience any problems during installation please contact the customer care team at Osmio Water on 0330 113 7181 or by emailing info@osmiowater.co.uk.

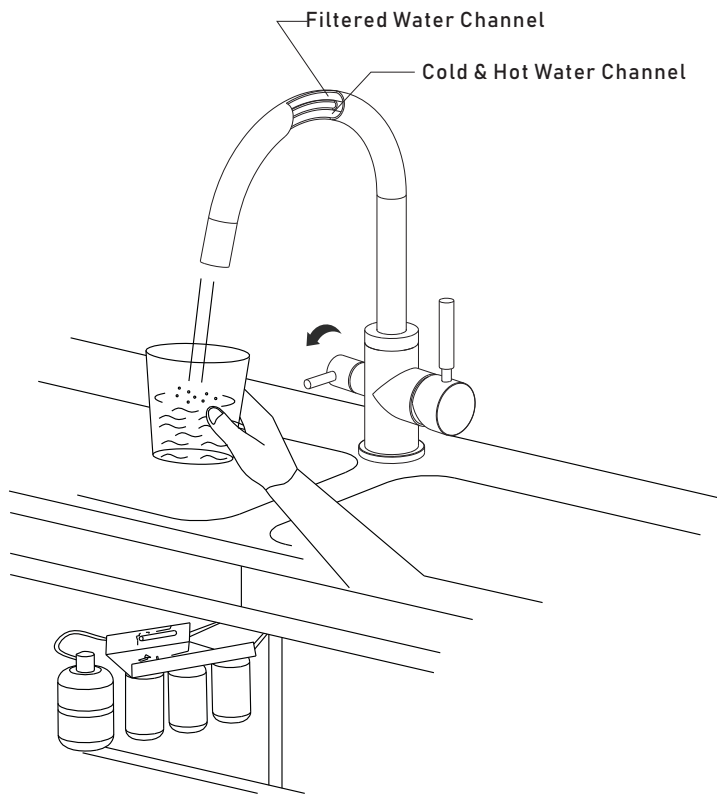
Step ⑩



Step ⑪



Step ⑫



Cleaning Instructions

1. It is recommended the tap surface is cleaned with warm soapy water followed with a rinse and wipe dry with a soft cloth
2. Do not use any cleaning products on the tap as they can damage the tap finish
3. Regular cleaning will prevent lime-scale from building up

Warranty

The Osmio range of 3 way taps comes with our extended 3 year warranty on valves and O-rings.

Tap Surface Finish

We offer a one year warranty for finish. As the tap surface can be damaged if you use any cleaning products to clean the tap, we recommend that you follow the cleaning instructions above.

