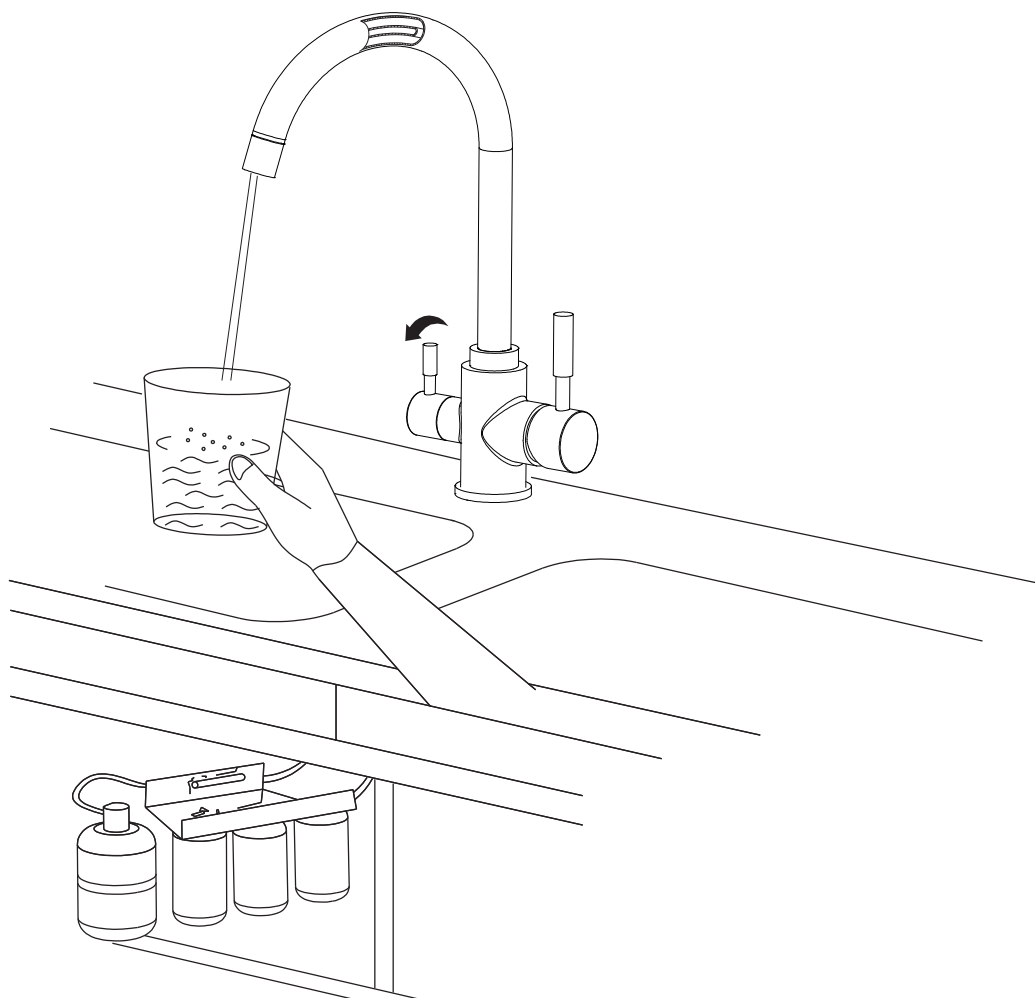


osmio

WATER TECHNOLOGY

Osmio Bella 304 Stainless Steel Three Way Kitchen Tap

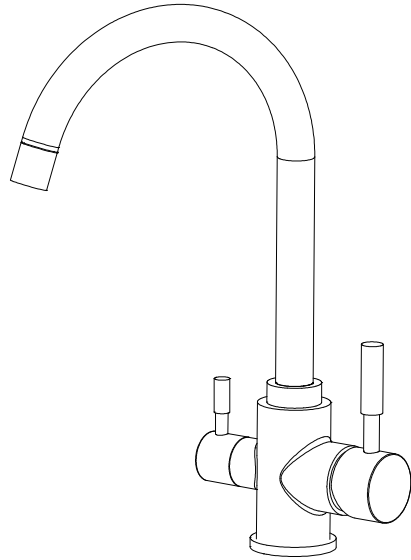


Installation Instructions

Three Way Kitchen Tap

Specifications

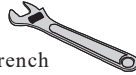
- 1.Material: 304 Stainless steel
- 2.Ceramic valve cartridge
- 3.Flow rated:2.2G/M base on 0.5Mpa
- 4.1/4" Connector for filtered water pipe



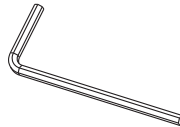
Installation tools

- *Monkey wrench
- *PTFE Tape
- *Allen key (2.5mm)

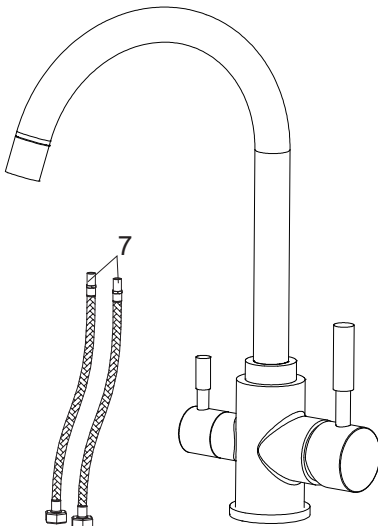
Monkey Wrench



PTFE Tape

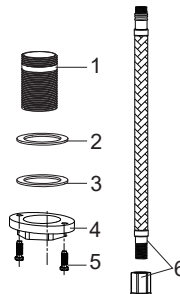


Allen Key (2.5 mm)



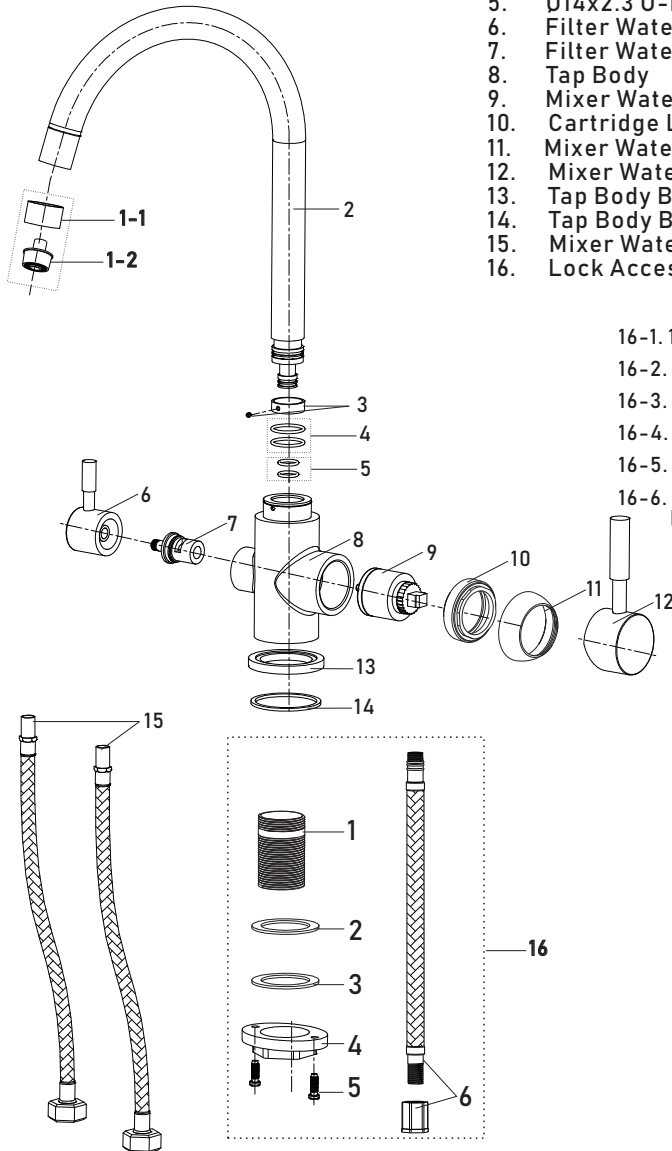
Accessories

1. 1 Pc lock bolt.
2. 1 Pc rubber gasket.
3. 1 Pc metal gasket.
4. 1 Pc lock nut.
5. 2 Pcs Fixed screw.
6. 1 set filter water hose and a plastic adapter (Jaco fitting).
7. 2 Pcs hot and cold 600mm hoses.



Replacement Parts

1. Aerator Set
1-1 Aerator Holder
1-2 Aerator
2. Spout Assembly
3. Plastic Lock Ring
4. Ø22x2.5 O-ring x 2
5. Ø14x2.3 O-ring x 2
6. Filter Water Level Set.
7. Filter Water Ceramic Cartridge
8. Tap Body
9. Mixer Water Ceramic Cartridge
10. Cartridge Lock nut
11. Mixer Water Cartridge Cover
12. Mixer Water Level set
13. Tap Body Base
14. Tap Body Base O-ring Ø47x3
15. Mixer Water Hose
16. Lock Accessories



16-1. 1 Pc lock bolt.

16-2. 1 Pc rubber gasket.

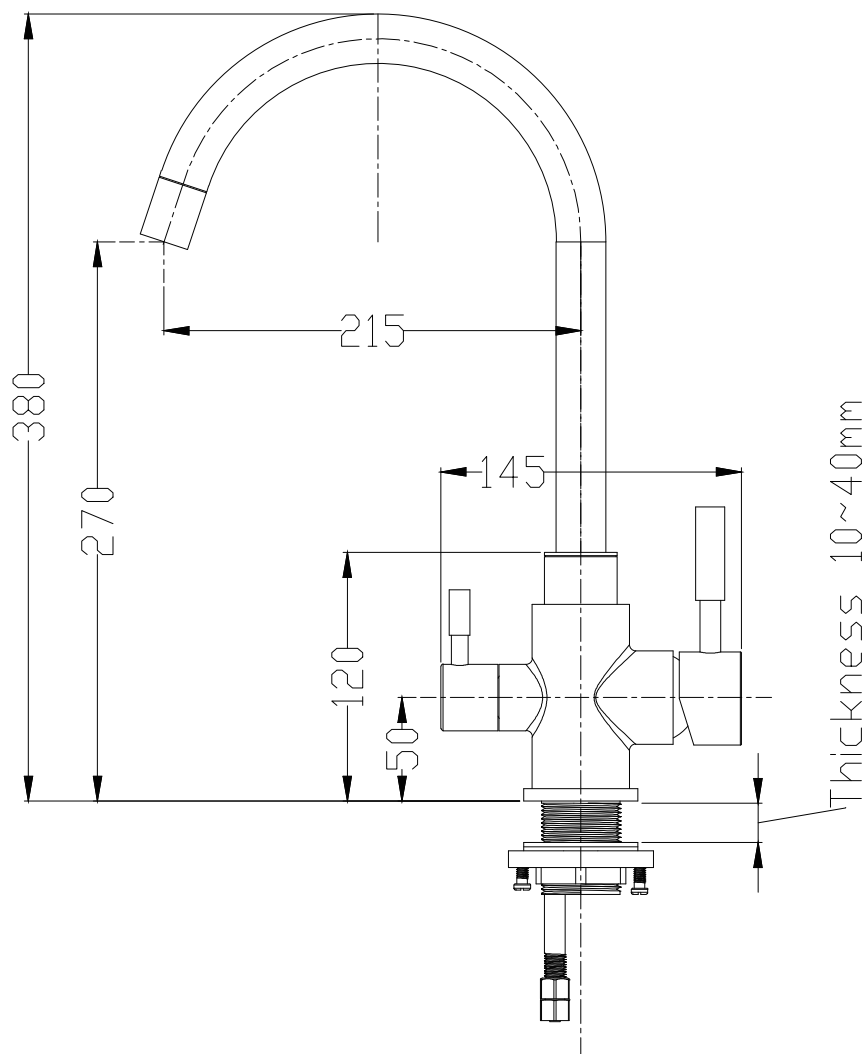
16-3. 1 Pc metal gasket.

16-4. 1 Pc lock nut.

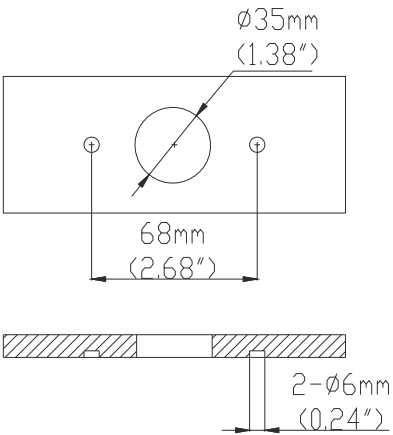
16-5. 2 Pcs Fixed screw.

16-6. 1 set filtered water hose and a plastic adapter (Jaco fitting).

Profile Drawing



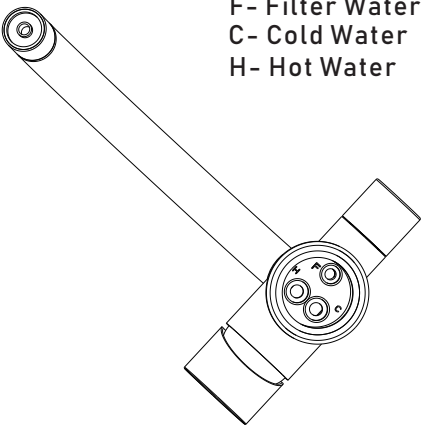
Tap Installation Instructions



Step ①

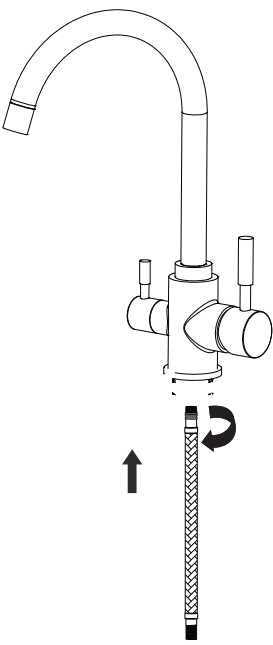
When installing the tap make sure each tap hose is attached to the correct connection as marked (hot/cold connection is interchangeable):

F- Filter Water
C- Cold Water
H- Hot Water



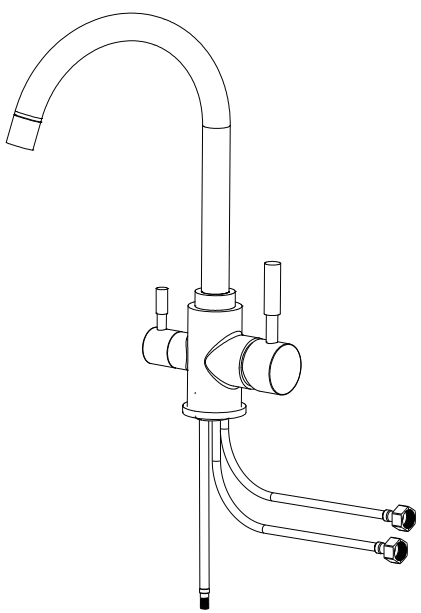
Step ②

Connect the filter water hose



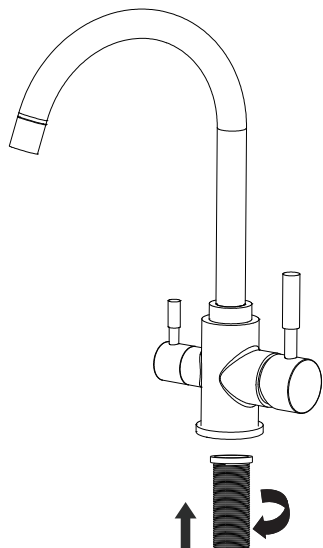
Step ③

Attach the hot and cold hose



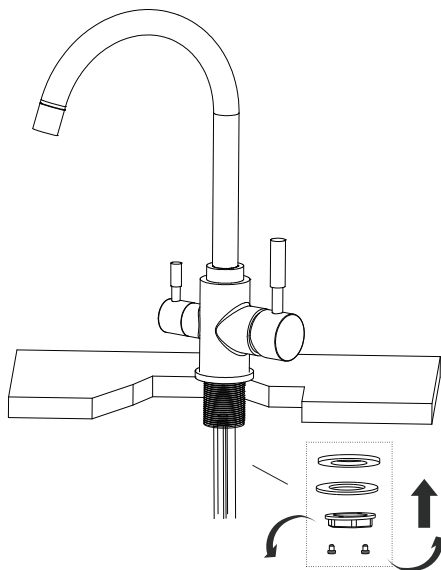
Step ④

Fix the Lock bolt to the tap before installing it on the countertop

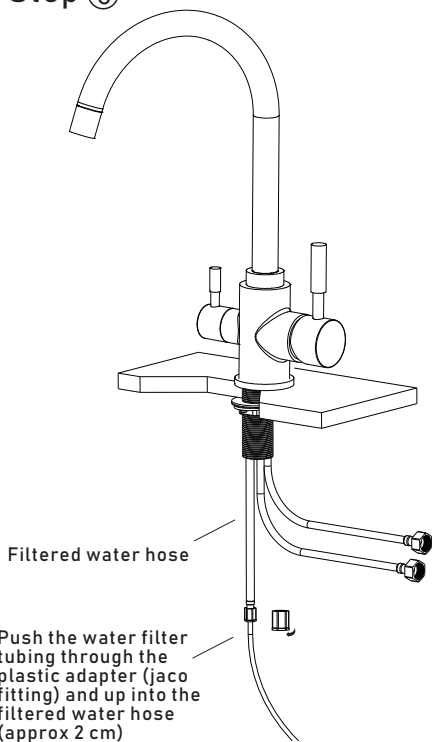


Step ⑤

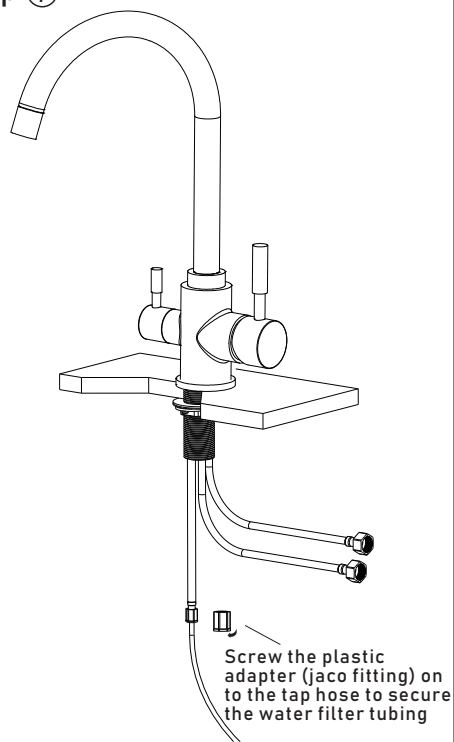
Attach the rubber gasket, metal gasket and lock nut to the lock bolt



Step ⑥

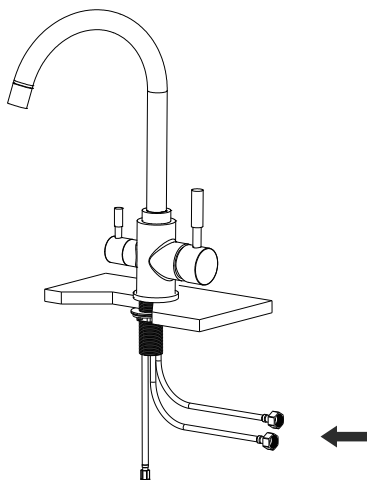


Step ⑦



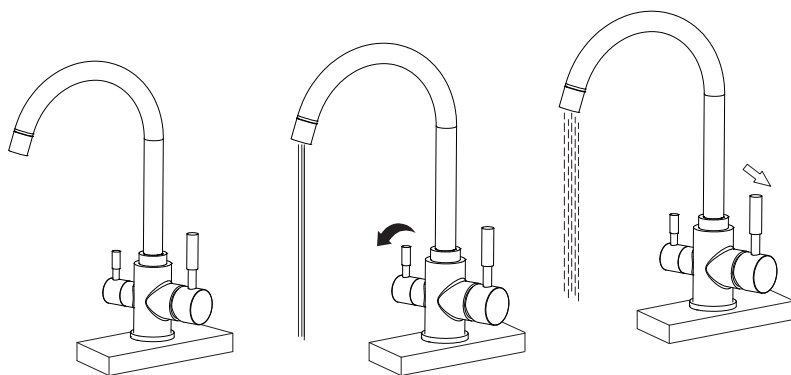
Step ⑧

Connect the cold & hot water hose to the supply water



Step ⑨

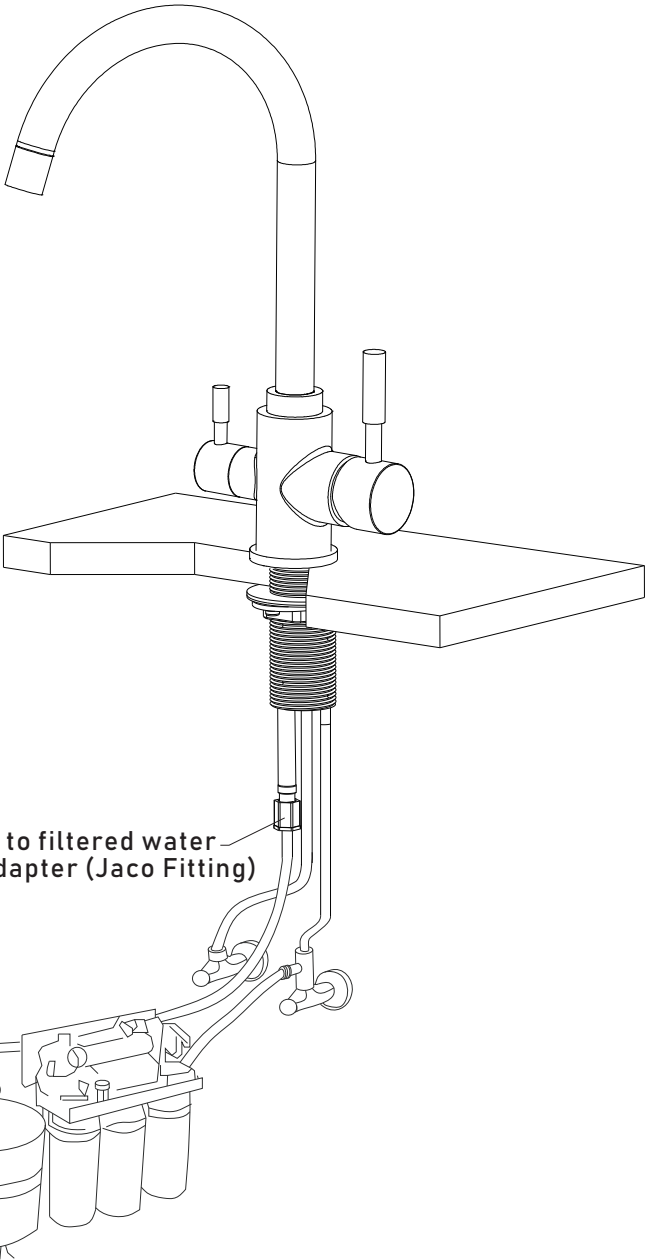
Test the tap to make sure it is dispensing water



Warning

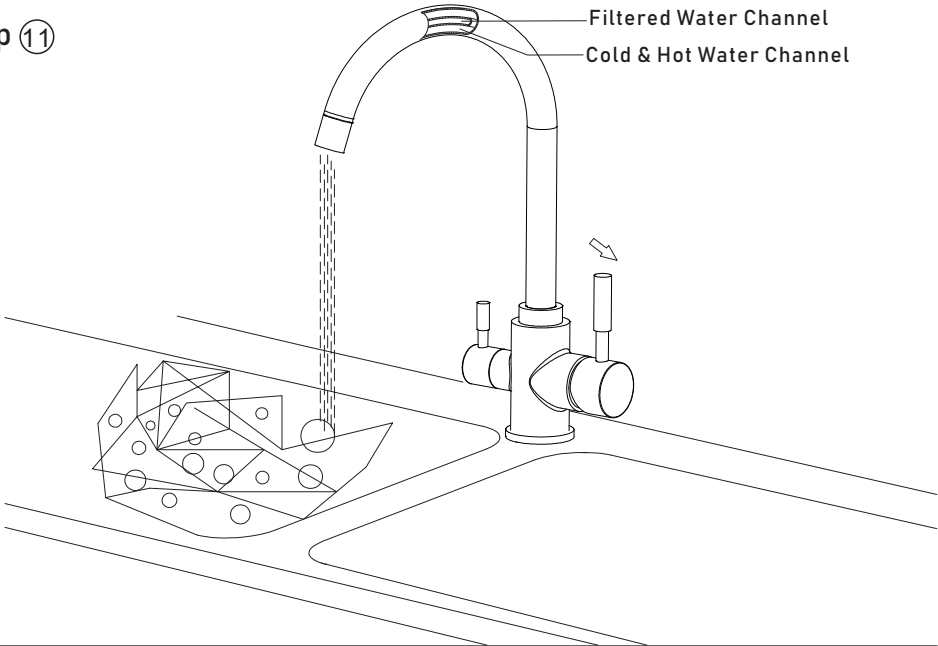
Please remove any sand, silt or anything that may block the valve cartridge before fixing the tap to your kitchen Counter top. If you experience any problems during installation please contact the customer care team at Osmio Water on 0330 113 7181 or by emailing info@osmiowater.co.uk.

Step ⑩

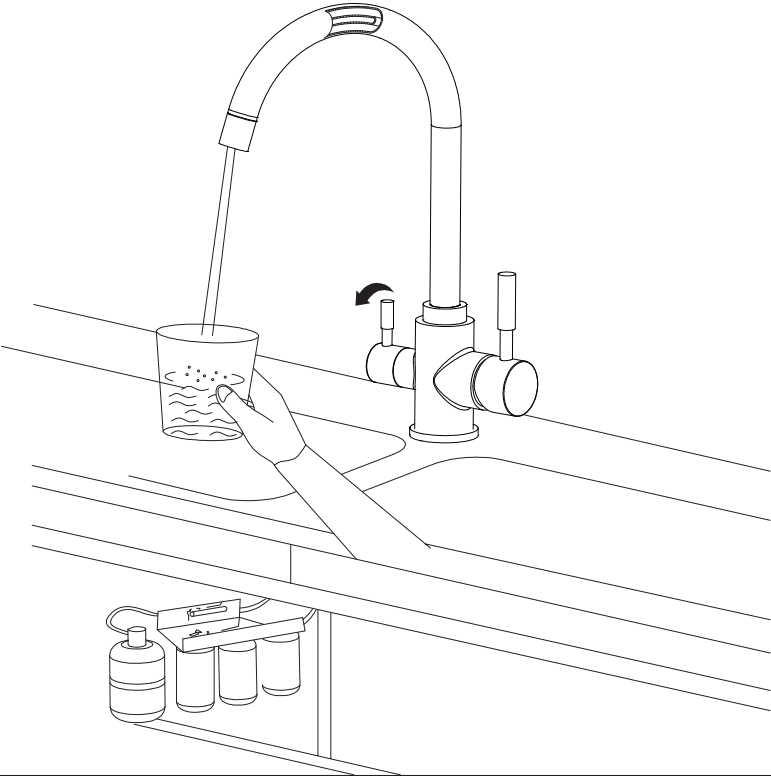


Filter system connected to filtered water hose using the Plastic adapter (Jaco Fitting)

Step ⑪



Step ⑫



Cleaning Instructions

1. It is recommended the tap surface is cleaned with warm soapy water followed with a rinse and wipe dry with a soft cloth
2. Do not use any cleaning products on the tap as they can damage the tap finish
3. Regular cleaning will prevent lime-scale from building up

Warranty

The Osmio range of 3 way taps comes with our extended 3 year warranty on valves and O-rings.

Tap Surface Finish

We offer a one year warranty for finish. As the tap surface can be damaged if you use any cleaning products to clean the tap, we recommend that you follow the cleaning instructions above.

